

WWW.ROLLINGUMBRELLAS.COM

The World's Most Advanced Umbrella Base

The Shademobile®

An outdoor umbrella base that rolls on wheels and locks in place.



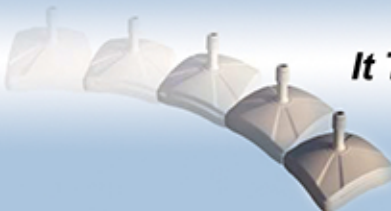
- ✓ Easy to Move
- ✓ Rolls on 4 Wheels
- ✓ No Tipping Required to Move
- ✓ Avoids Heavy Lifting
- ✓ Up to 125 lbs of Stability



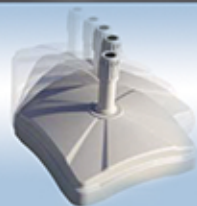
Easy to Move



It Rolls



It Turns



It Pivots

Style...Function...Durability

- Fits 1-3/8" to 2-1/16" diameter umbrella poles.
- Patented design automatically centers the umbrella pole at the top AND THE BOTTOM of the base.
- Made of durable, maintenance free, high density polyethylene.



Shademobile®

ROLLING UMBRELLA BASES

WWW.ROLLINGUMBRELLAS.COM



Shademobile Rolling Umbrella Base - Sand



Shademobile Rolling Umbrella Base - Bronze



Table Top Accessory - Sand

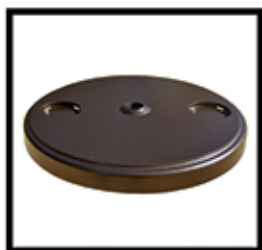


Table Top Accessory - Bronze

The **Shademobile®** can be seen at
Hotels...Restaurants...Resorts



Shademobile Rolling Umbrella Base with Table - Sand



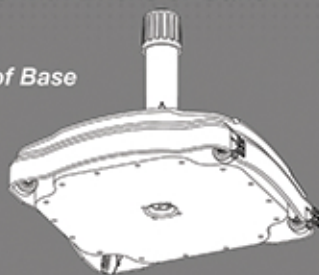
Shademobile Rolling Umbrella Base with Table - Bronze

Specifications

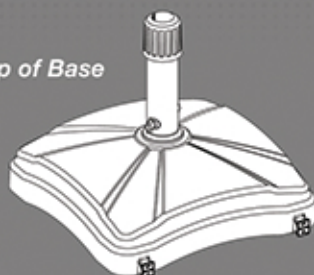
Unit Dimensions

22" L X 22" W X 20" H (to top of center post)
Fits Standard 1-3/8" to 2-1/16" Diameter Umbrella Poles
Fill Base with Bricks or Sand

Bottom of Base



Top of Base



The Shademobile®

Rolling Umbrella Base

- ✓ Commercial Quality
- ✓ Heavy Duty Construction
- ✓ Designed and Engineered for Commercial Use
- ✓ Up to 125 lbs of Stability

Highest Quality Craftmanship

All of the components used to manufacture the Shademobile® Rolling Umbrella Bases are crafted from the finest, weather-resistant structural materials available. Our state-of-the-art design is made in the USA and is protected by multiple patents.

The Shademobile® by Rolling Umbrellas Inc. is the result of years of research and development. From designing and engineering to prototypes and field testing, the Shademobile® is the most innovative product in its category.



ROLLING UMBRELLAS INC., DANVILLE, CA

Phone: (925) 820-7800 • Toll Free: (855) 820-7800 • www.RollingUmbrellas.com

