

# SHADEMOBILE®

## Through-Bolt Instructions

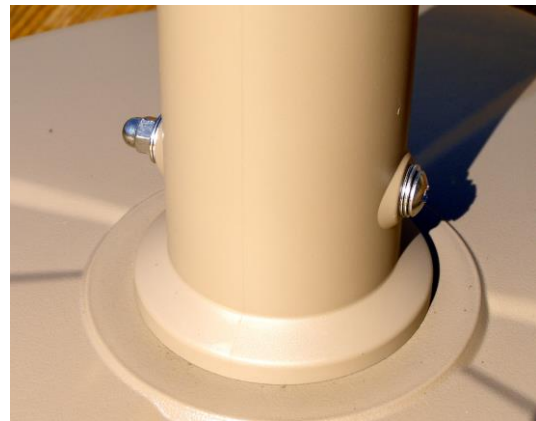
(To eliminate the side knobs and to secure the umbrella pole in the base.)



Questions? Email 24 hrs a day/ 7 days a week: [info@rollingumbrellas.com](mailto:info@rollingumbrellas.com)



Remove side knobs from center post. Insert umbrella pole into base.  
Using the 2 side knob holes as guides, drill 1/4" diameter pilot holes through each side of umbrella pole as shown.



Remove umbrella pole and drill a 5/16" diameter clearance hole through each side of umbrella pole.  
Insert umbrella pole back in base and align holes with holes in center post.  
Insert bolt with 2 washers on each side and fasten nut as shown.

**Shademobile**®  
ROLLING UMBRELLA BASES

Rolling Umbrellas Inc  
[www.RollingUmbrellas.com](http://www.RollingUmbrellas.com)

If you have any questions please email us at  
[info@RollingUmbrellas.com](mailto:info@RollingUmbrellas.com).  
Corporate office 925-820-7800 or toll free 1-855-820-7800.

  
MADE IN  
U.S.A.